

# ***Power Cut LPH 50***

## ***For industrial and repair applications***

- **Powerful and reliable in operation.**
- **Cutting capacity 12 mm mild steel.**
- **Economical - low operating cost.**
- **Sturdy design.**
- **Controls situated on the front panel - easy to operate.**

### ***Applications for industrial and repair works***

The LPH 50 handles all metals and is ideal to use for fabrication and maintenance purposes such as cutting of plates up to 12 mm thickness.

### ***Cutting torch***

The LPH 50 is equipped with an air cooled torch, the PT 27. The torch is easy to operate and equipped with a safety device.

### ***Cutting process***

The output current is on the front panel. The operator can select either 30 A or 50 A in order to match the power requirements to the cutting conditions. The cutting process is initiated by pressing the torch switch. The pilot arc ignites by HF (High Frequency). By applying the pilot arc onto the work piece, the main arc is ignited. Releasing the torch switch terminates the cutting process.



### ***Reliability***

A safety device automatically shuts off the machine in case of overload or insufficient air supply. The LPH 50 conforms to the standards EN-50192, EN-60974-1 and EN-50199. The excellent reliability of the LPH 50 results in minimum downtime.

# Power Cut LPH 50

For industrial and repair applications

Technical data		LPH 50
Mains supply	V / Hz	400 / 50
Fuse, slow	A	25
Rated power	kVA	16.5
Max output		
at 60% duty cycle	A	50
at 100% duty cycle	A	30
Open circuit voltage	V	320
Pressure	bar	4.5 - 7.0
Air	l / min	118
Cutting capacity, Fe	mm	12/15*
Enclosure class	-	IP23
Weight	kg	89
Dimensions l x w x h	mm	680 x 325 x 715

\* quality cut/severing

## Delivery content

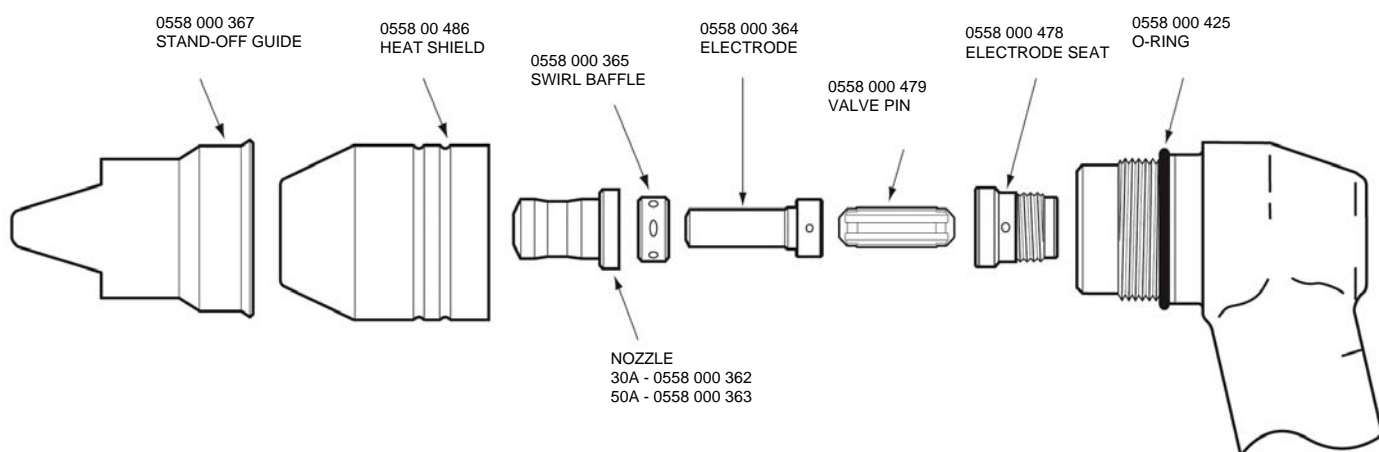
PT 27 plasma cutting torch with 7.6 m hose, 3 m mains cable and 6 m return cable with clamp.

## Ordering information

LPH 50  
PT 27

0457 289 880  
0558 000 487

## TORCH PT 27



The right is reserved to alter specifications.

Approved according to the ISO 9000 system..



**ESAB AB**  
Herkulesgatan 72  
Box 8004  
S-402 77 GÖTEBORG, Sweden  
Tel:+46 31 50 90 00  
Fax:+46 31 50 93 90  
e-post: [info@esab.se](mailto:info@esab.se)  
[www.esab.com](http://www.esab.com)