

Power Cut LPH 80

For industrial and repair applications

- **Powerful and reliable in operation.**
- **Cutting capacity 25 mm mild steel.**
- **Economical - low operating cost.**
- **Sturdy design.**
- **Controls situated on the front panel - easy to operate.**

Applications for industrial and repair works

The LPH 80 handles all metals and is ideal to use for medium duty applications such as fabrication, maintenance and metal scrapping. The cutting capacity is 25 mm mild steel.

Cutting torch

The LPH 80 is equipped with an air cooled torch, the PT 27. The torch is easy to operate and equipped with a safety device.

Cutting process

The output current is on the front panel. The operator can select either 40 A, 60 A or 80 A in order to match the power requirements to the cutting conditions. The cutting process is initiated by pressing the torch switch. The pilot arc ignites by HF (High Frequency). By applying the pilot arc onto the work piece, the main arc is ignited. Releasing the torch switch terminates the cutting process.



Reliability

A safety device automatically shuts the machine off in case of overload or insufficient air supply. The LPH 80 conforms to the standards EN-50192, EN 60974-1 and EN-50199. The excellent reliability of the LPH 80 results in minimum downtime.

Power Cut LPH 80

For industrial and repair applications

Technical data		LPH 80
Mains supply	V / Hz	400 / 50
Fuse slow	A	32
Rated power	kVA	20
Max output		
at 60% duty cycle	A	80
at 100% duty cycle	A	60
at 100% duty cycle	A	40
Open circuit voltage	V	310
Pressure	bar	4.5 - 7.0
Air	l / min	118
Cutting capacity, Fe	mm	25/35*
Enclosure class	-	IP23
Weight	kg	131
Dimensions l x w x h	mm	760 x 390 x 845

* quality cut/severing

Delivery content

PT 27 plasma cutting torch with 7.6 m hose, 3 m mains cable and 6 m return cable with clamp.

Ordering information

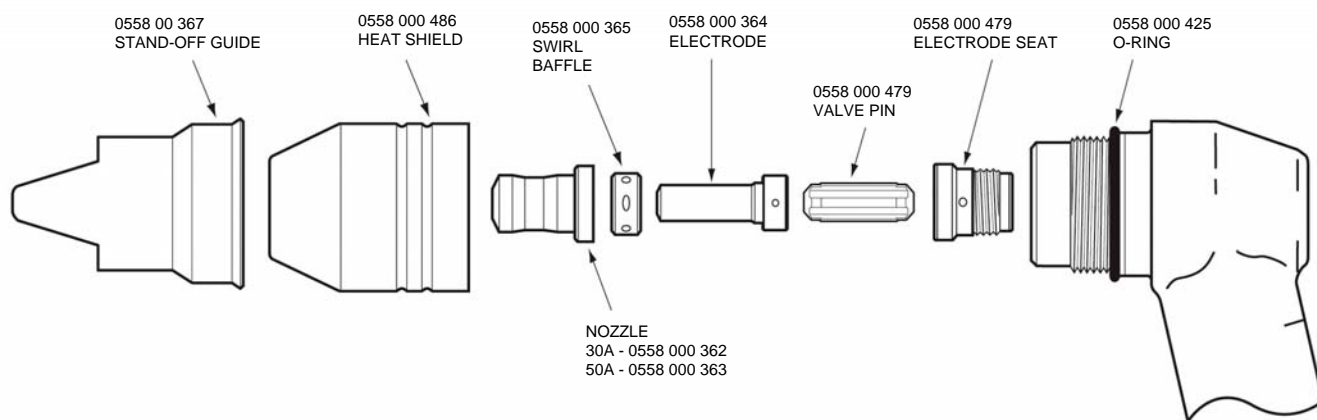
LPH 80

0457 290 880

PT 27

0558 000 487

TORCH PT 27



The right is reserved to alter specifications.

Approved according to the ISO 9000 system..



ESAB AB
Herkulesgatan 72
Box 8004
S-402 77 GÖTEBORG, Sweden
Tel:+46 31 50 90 00
Fax:+46 31 50 93 90
e-post: info@esab.se
www.esab.com

2004-05-24